



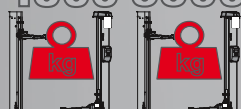
Automotive Equipment

# HC4502 B HC3502 B

EN Electro-hydraulic two post lifts  
with base connection



4500 3500





Automotive Equipment

# HC4502 B HC3502 B

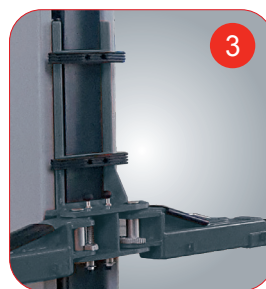
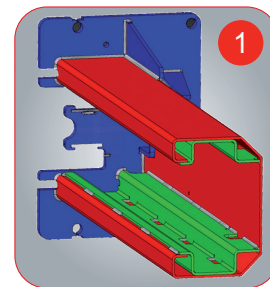
## Electro-hydraulic two post lifts with base connection

Electro-hydraulic two post lifts with base connection for low ceiling height.

**Realignment of the two carriages** using metal cables that guarantee **excellent synchronisation**.

Three-stages asymmetrical lifting arms.

- 1 **Internally reinforced column structure** for little bending and internal cable guiding.
- 2 **Double threaded lifting pad** to ensure excellent vertical adjustment (95÷180 mm).
- 3 Rubber door protections. **Toothed sector arm** rotation stop system
- 4 **Four three-section asymmetrical arms**. Last section of arms very thin (30mm), for easy access to flat vehicles.



### TECHNICAL DATA

	HC4502 B	HC3502 B
Lift capacity	4500 kg	3500 kg
Lifting time	40 s	
Three phase motor	400/230V - 3kW - 3Ph - 50/60Hz	
Single phase motor	230V - 3kW - 1Ph - 50/60Hz	
Max. lifting height	2003 mm	
Lift minimum height	100 mm	

## ACCESSOIRES

### All models are equipped with:

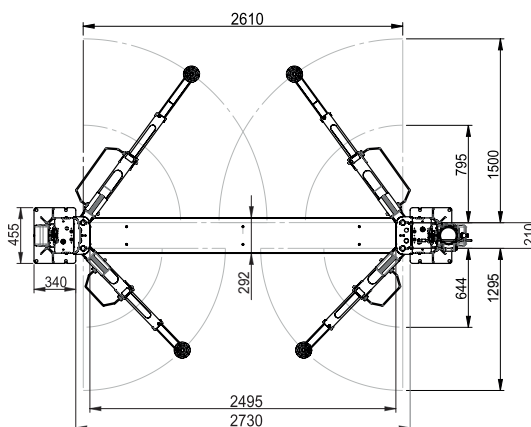
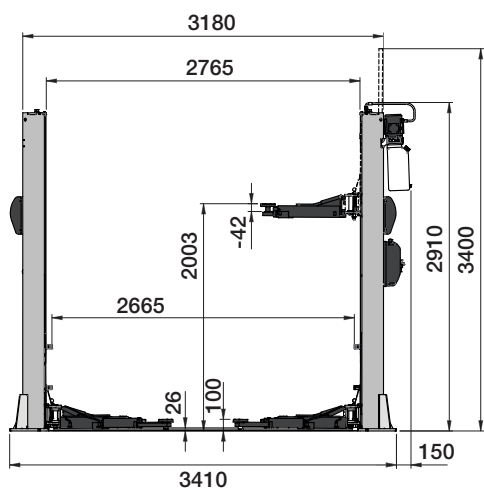
- Mechanical carriage support device on each column ensures optimum working safety.
- Two set of extension pads.

STANDARD



OPTIONAL\* For other optional accessories, refer to separate catalogue

## DIMENSIONS



## OPTIONAL ACCESSORIES

- A 8-43300021 Set of 4 extension for pads, H=35 mm
- B 8-43300014 Set of 4 extension for pads, H=80 mm
- C 8-43300015 Set of 4 extension for pads, H=140 mm
- D 8-43300016 Set of 4 adapters for Mercedes Sprinter



NEXION SPA - ITALY

[www.tecoautomotive.com](http://www.tecoautomotive.com) - [teco@teco.it](mailto:teco@teco.it)

Photographs, features and technical data are not binding, they are subject to change without notice - Cod. DPTC000342A\_Ed. 01\_2023

Designed in  
ITALY

